

NATIONAL CAPITAL COMMISSION
COMMISSION DE LA CAPITALE NATIONALE

The Forest Strategy

Implementation Plan

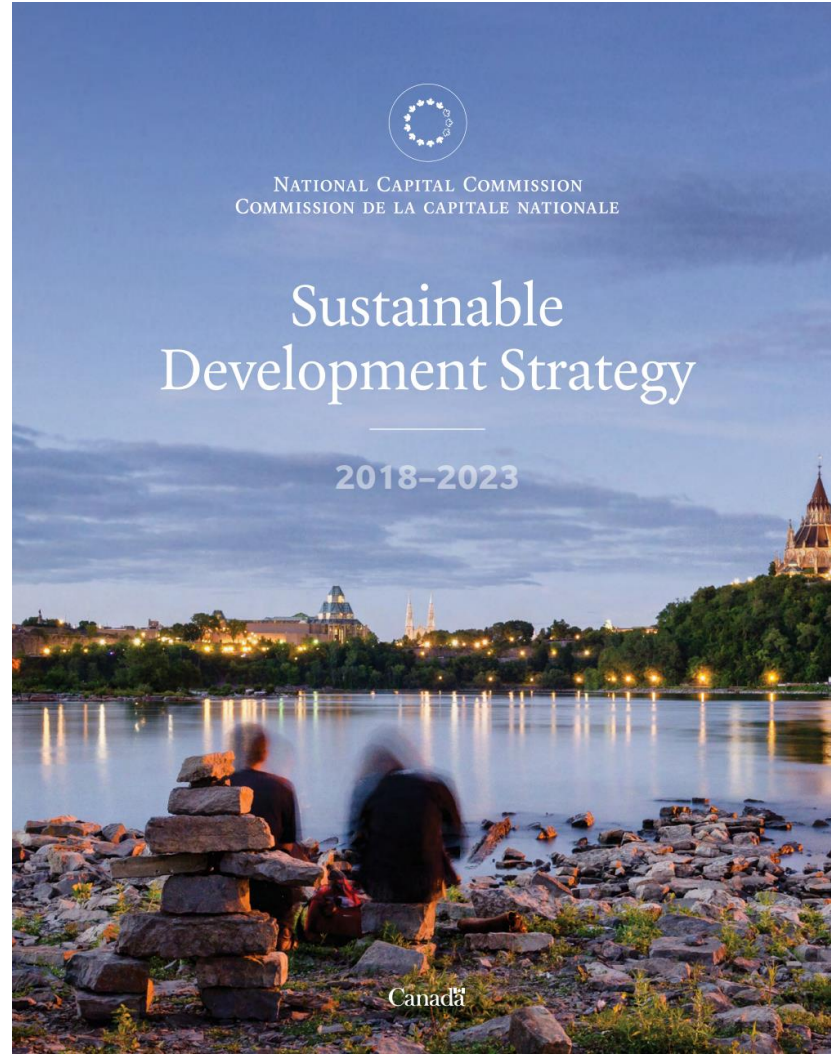
June 23rd, 2022

La Stratégie sur les forêts

Plan d'implantation

23 juin 2022





Réalisations récentes



Lignes directrices
Lignes directrices de conception sûre pour les oiseaux



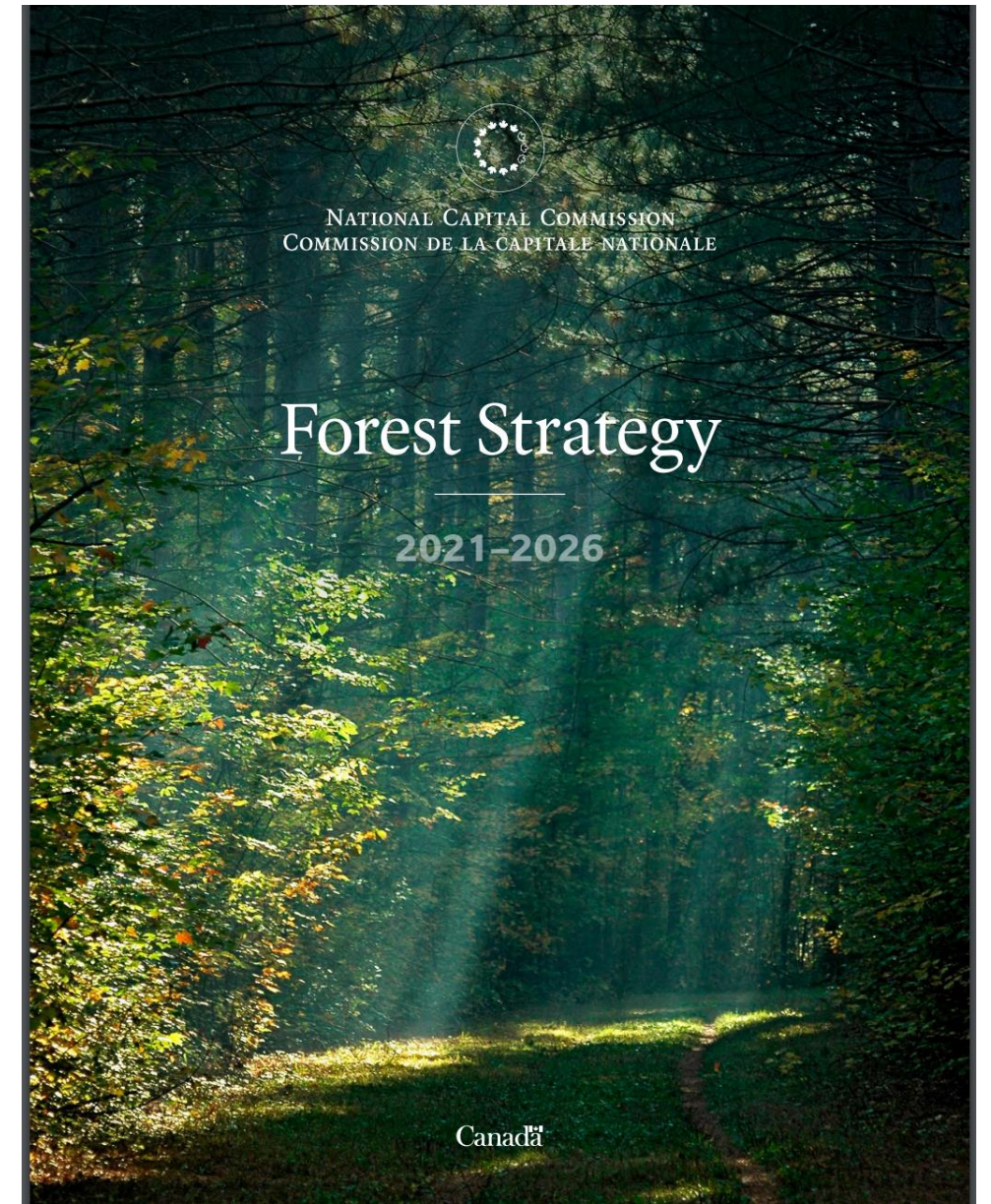
Stratégie
La stratégie sur les forêts de la CCN



Projet
Adaptation aux changements climatiques



Étude
Capital naturel : la valeur économique de la Trame verte de la CCN







Understand Our Trees and Forests

OBJECTIVES	Improve knowledge through data collection and analysis.	ACTIONS	1. Update the 2019 canopy cover study.
			2. Update the GIS urban forest inventory, including heritage trees.

Protect Existing Canopy Cover

OBJECTIVES	Protect trees from the adverse effects of development, events and invasive species.	ACTIONS	3. Develop heritage tree protection guidelines, and identify where these guidelines will be applied, through a heritage tree inventory.
			4. Adopt guidelines for the protection of trees near construction sites and compensation measures for when trees must be cut down.
			5. Adopt guidelines on invasive species management, and provide invasive species management training to staff, contractors and partners.

Plant the Right Trees in the Right Place

OBJECTIVES	Plant diverse species and ages of trees strategically to increase resilience.	ACTIONS	6. Plant 100,000 trees strategically, for example, in areas with below-average urban forest cover, where populations are at risk from urban heat islands, and as visual and auditory buffers.
			7. Identify tree species, varieties, cultivars or seed sources suited to the National Capital Region's future climate for different land types and functions.
	Optimize planting sites and tree survival.		8. Adopt specifications on tree planting operations, establishment, maintenance and monitoring.
			9. Conduct a feasibility study to explore options related to the establishment of a tree nursery on NCC lands.

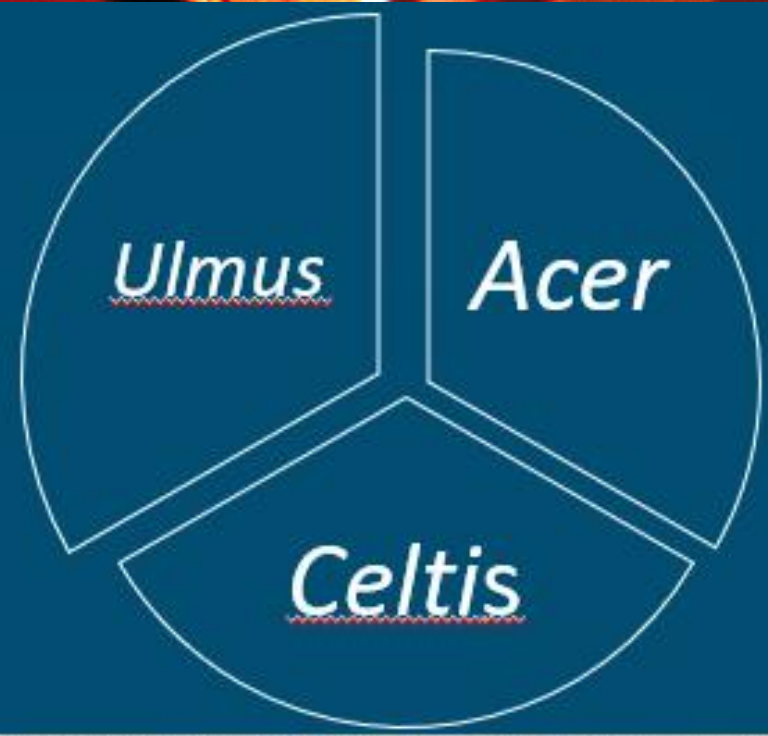
Manage for Resilience, Safety and Efficiency

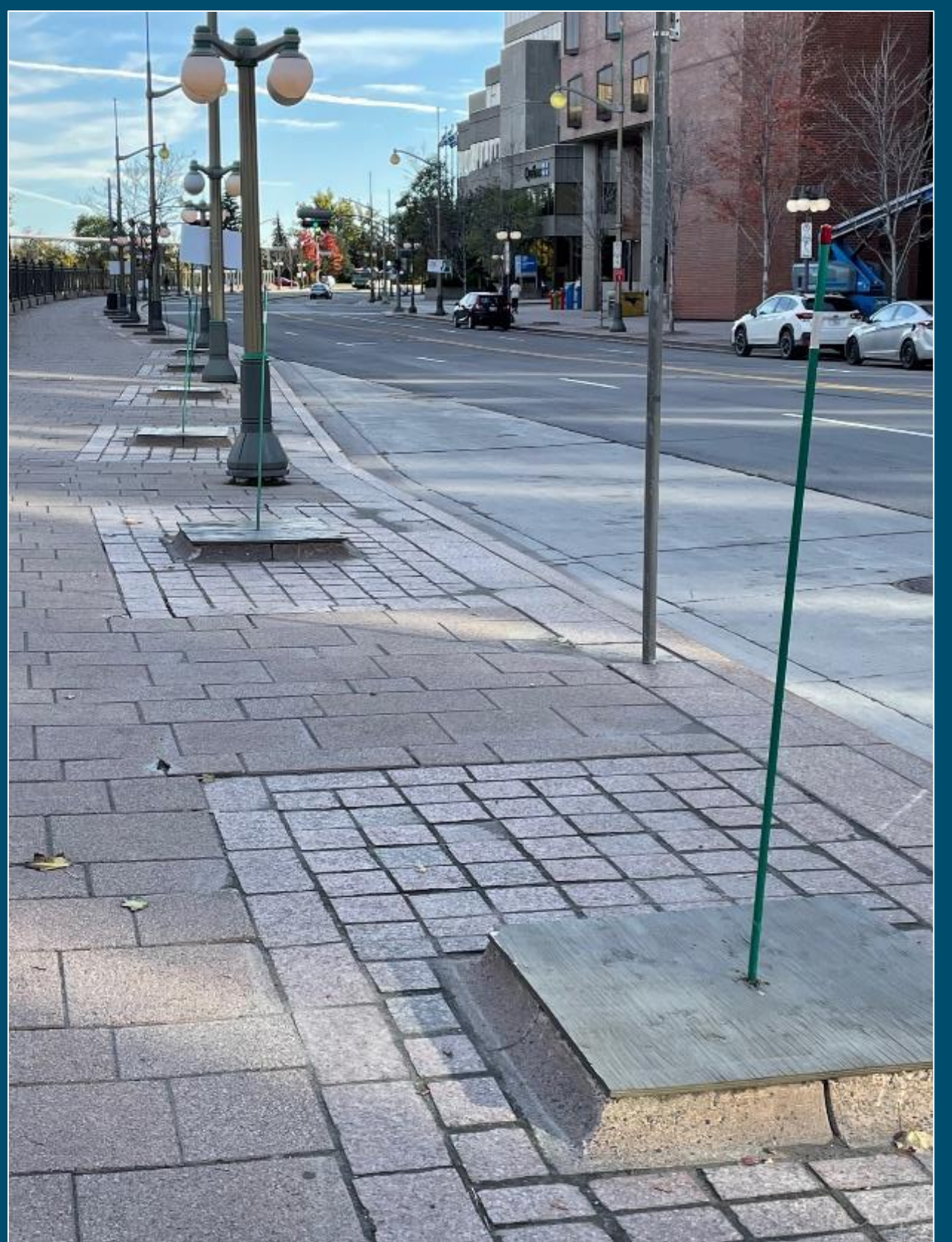
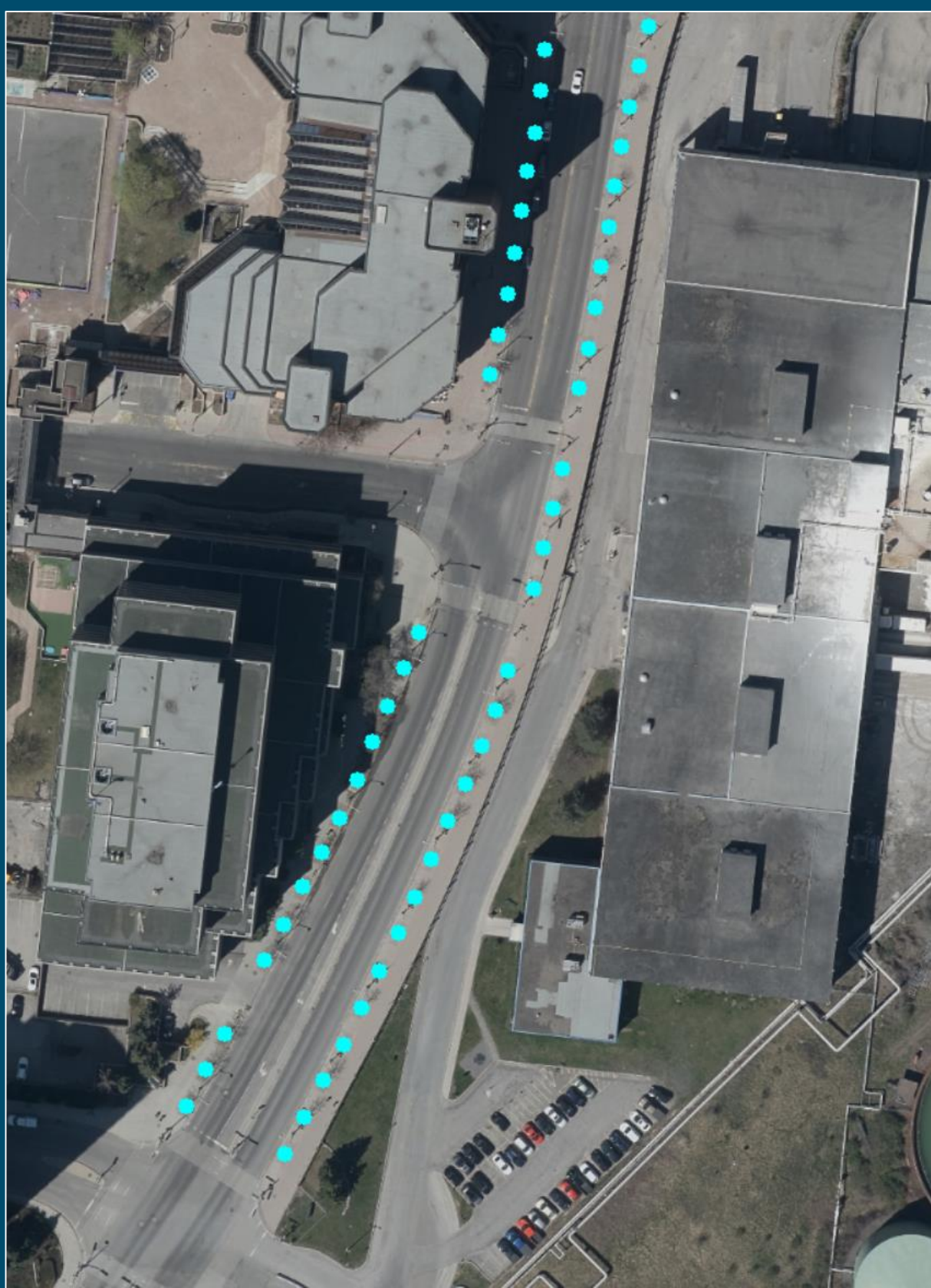
OBJECTIVES	Improve compliance with guidelines and policies.	ACTIONS	10. Explore options for improving compliance with tree and forest management policies and contractual obligations.
			11. Better integrate tree protection into project management procedures.
	Manage trees for public safety and to support tree health.		12. Adopt a risk-based approach to better understand forest fire risk.
			13. Establish and implement a systematic tree maintenance program in coordination with the urban tree inventory.
	Recognize the value of trees as assets.		14. Complete a literature review to better understand soil contaminant transfer to fruit and nut trees.
			15. Identify the financial value of trees for eventual integration into asset accounting processes.

Engage With Partners and the Community

OBJECTIVES	Integrate traditional Algonquin knowledge into forest management. ¹	ACTIONS	16. Support Indigenous forest management capacity building by assisting the Indigenous Guardians program.
			17. Use Anishinaabemowin tree names in NCC literature and signage.
	Engage community groups, universities, municipalities and the public in forest stewardship.		18. Explore the possibility of creating an educational demonstration site by converting a managed forest stand in the Greenbelt to a more native structure.
			19. Create a corporate/community tree-planting partnership program.
			20. Coordinate tree planting on adjoining properties with the City of Ottawa, Ville de Gatineau and adjacent municipalities to maximize resources and benefits.

#2







Tree #36 Area of roots to be removed.

Root barrier installed at blue line.



#4

#6



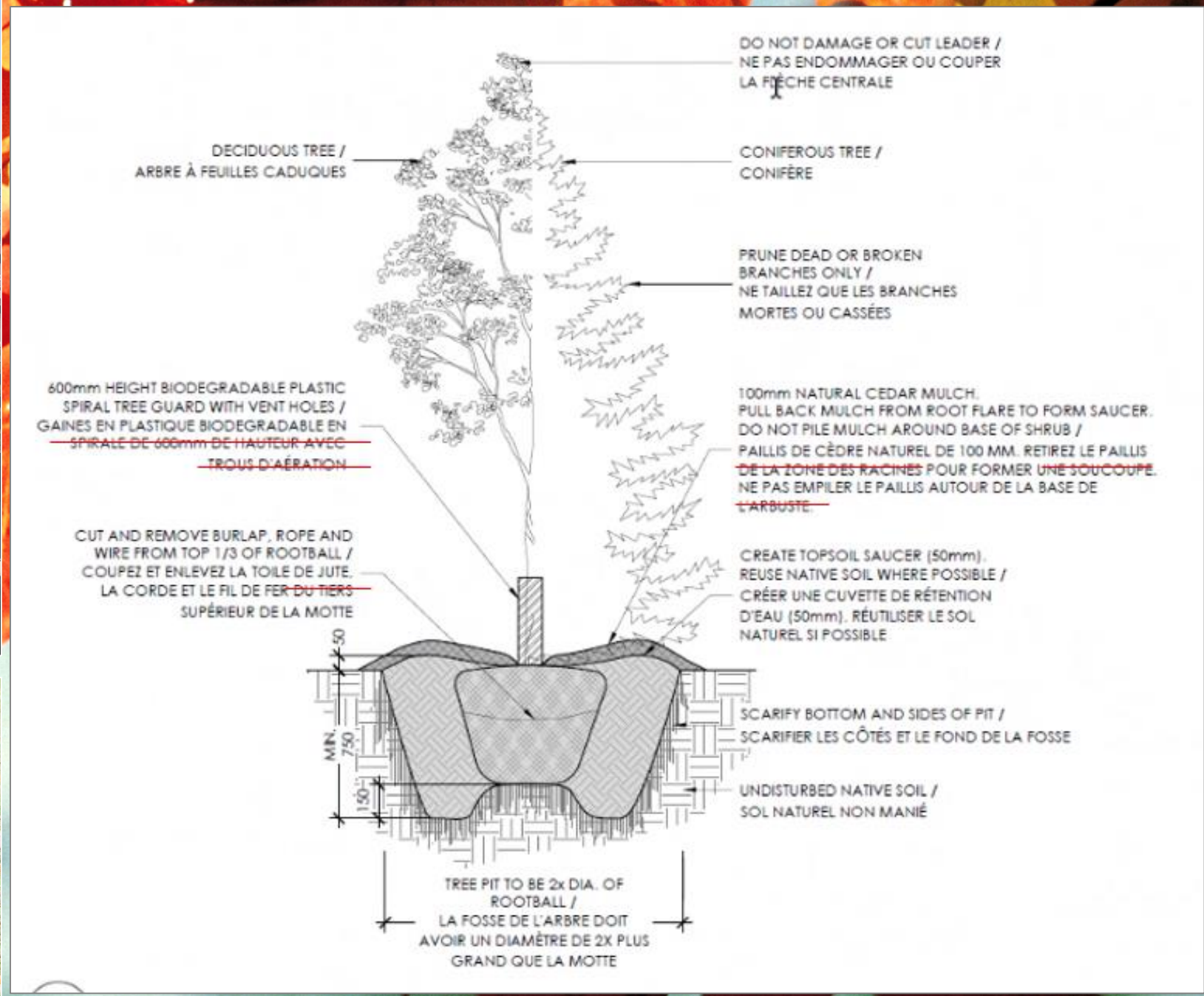
**2BILLION
TREES**



*Planting today
for a better tomorrow*

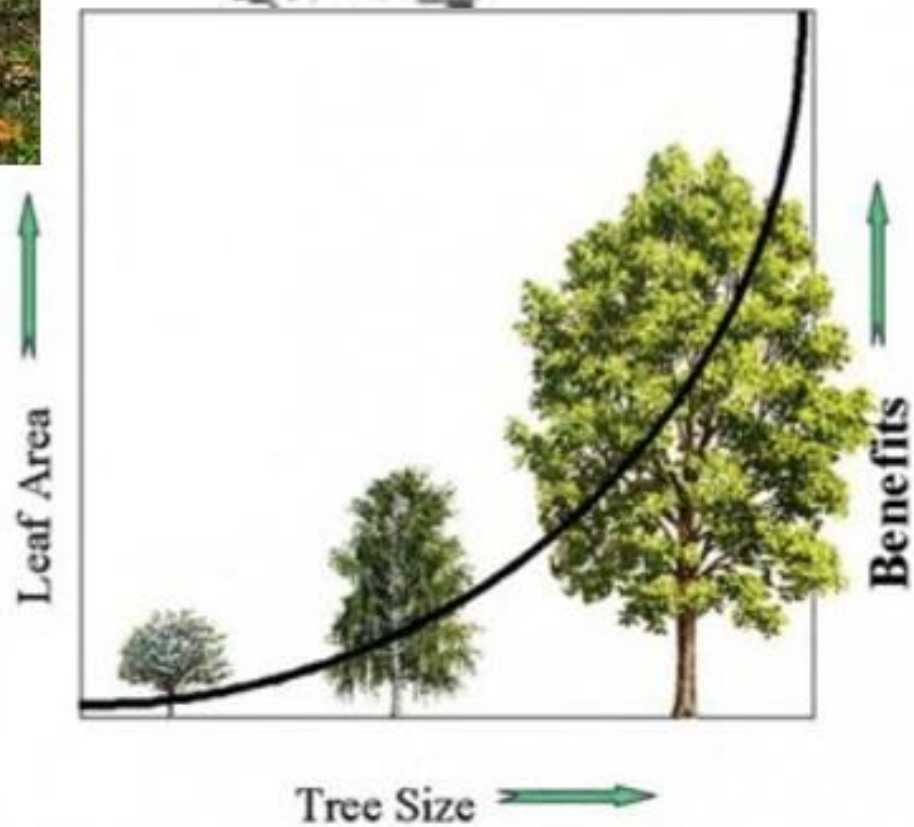
#2BillionTrees

#8





#12



#20



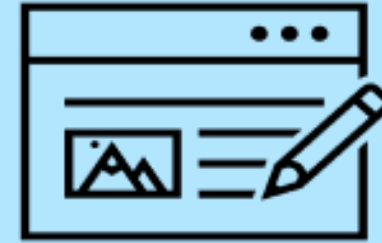
thistledown
FOUNDATION



envirocentre



Comité Haute
Direction



5 Years
Financial Plan

2022

2023



- Parc de la *Gatineau Park*
- Ceinture de verdure/*Greenbelt*
- Official Residences
- *Real Estate Management*



Mise à
jour C.A.



CHD





DISCUSSION